

Discussion

The fires in Northern California alone have left in its path of destruction over 8,400 structures and the confirmed deaths of 42 individuals, with 21 still missing. According to Cal Fire³, the numbers are going to continue to increase because damage assessment teams are getting into the areas and finally getting an accurate count. Moody's⁴ estimated the insured losses for property and casualty insurers from the Northern California blazes "will be among the costliest wildfires on record for the United States." The credit ratings firm estimates the losses will total "\$4.6 billion or higher," noting that its estimate was based on Cal Fire's earlier 5,700 structures figure.

FEMA designated eight counties as the hardest hit, but these eight only represent a small section of the areas that struggled with fire and fire related issues. The map below, provided by CAL Fire, illustrates how much of the state has been affected by fire in the 2017 year.

Beyond the fire zones, millions of Californians are facing a secondary, more insidious threat, thanks to the high winds that are fueling the fires: polluted and potentially toxic air. Those potentially deadly particles are creating unhealthy air as far as 70 miles away from fire zones, according to Bay Area Air Quality Management District spokesman Tom Flannigan. Those closer to the fire zones are even more at risk, since the air in those regions could also be tinged with toxic heavy metals like arsenic, cadmium, copper and

³ The California Department of Forestry and **Fire** Protection (**CAL FIRE**) is the State of California's agency responsible for **fire** protection in State Responsibility Areas of California totaling 31 million acres, as well as the administration of the state's private and public forests.

⁴ See in general <https://www.moody.com/Pages/atc002.aspx>

lead, as the smoke picks up chemicals from burned-up plastic, cars, and building materials.

The conditions created by the fires have created the need for many schools to evacuate or close due to air quality issues. The indirect impact on schools has been the loss of family homes, places of employment and displacement of those families as they begin to contemplate what rebuilding will entail.



Request

The areas of California that have been affected by fire is very similar to the areas of the Gulf Coast that have been affected by hurricanes, in that some schools have been completely destroyed, while other have sustained damage or have been affected by the fire debris. The

California Department of Education (CDE) has identified 7 schools in the fire zones that have been damaged or destroyed and 5 schools in and around the fire zones that have been affected by debris. Students from these schools have been shifted to other schools. These other schools are now incurring additional expenses in support of these students. It is possible that additional schools have been affected by debris and smoke, but have not yet been reported to the CDE. The CDE, on behalf of the schools affected by the wildfires, is requesting those schools receive special consideration in securing their E-rate funds. Part of this request includes “surrounding areas” in order to help the schools affected by smoke and debris as well as those who have grown in their student population as a result of relocating students from neighboring schools that were damaged or destroyed.

The following relief is requested for the eight counties eligible for FEMA assistance and the surrounding areas of Butte, Tehama, Plumas, Glenn, Colusa, Sierra, Lake, Yolo, Mendocino, Trinity, Humboldt, Napa, Solano, Marin, Nevada, Placer, Sutter, Orange, Los Angeles, San Bernardino, Riverside, San Diego, Sonoma and Yuba counties:

- Waiver of the September 30, 2017 deadline to request an Implementation Deadline Extension and associated Service Substitutions and SPIN Change Requests.
- Waiver of the deadline associated with the FCC Form 486.
- Waiver of the deadline associated with the FCC Forms 472 and 474.
- Additional time to respond to PIA requests.
- Waiver of Appeal deadlines.

Additional assistance is requested for the eight counties identified by FEMA: Butte, Lake, Mendocino, Napa, Nevada, Orange, Sonoma and Yuba counties:

- Waiver of the document retention policy for school and libraries that have suffered significant damage to their facilities. Here is a list of known facilities with significant damage:

- Destroyed:
 - ✓ Hidden Valley Elementary (Satellite campus), Santa Rosa City Schools
 - ✓ Anova (private, special education)
 - ✓ Redwood Adventist (private)
- Damaged:
 - ✓ Riebli Elementary, Mark West
 - ✓ Roseland Collegiate Prep (charter)
 - ✓ Cardinal Newman High School (private)
 - ✓ St. Rose (private)

- Provide additional Category 2 funds for schools and libraries that suffered damage to their facilities so that they may recover more quickly. Here is a list of known facilities with significant damage:

- Destroyed:
 - ✓ Hidden Valley Elementary (Satellite campus), Santa Rosa City Schools
 - ✓ Anova (private, special education)
 - ✓ Redwood Adventist (private)
- Damaged:
 - ✓ Riebli Elementary, Mark West
 - ✓ Roseland Collegiate Prep (charter)
 - ✓ Cardinal Newman High School (private)
 - ✓ St. Rose (private)
- Surrounded (debris issues):
 - ✓ Schaefer Elementary, Piner Olivet
 - ✓ Hidden Valley Elementary (main campus), Santa Rosa City Schools
 - ✓ Rincon Valley Middle, Santa Rosa City Schools
 - ✓ Dunbar Elementary, Sonoma Valley Unified
 - ✓ Rincon Valley Christian (private)

Visual Evidence of Damage

Exhibit 1: School in Santa Rosa, CA

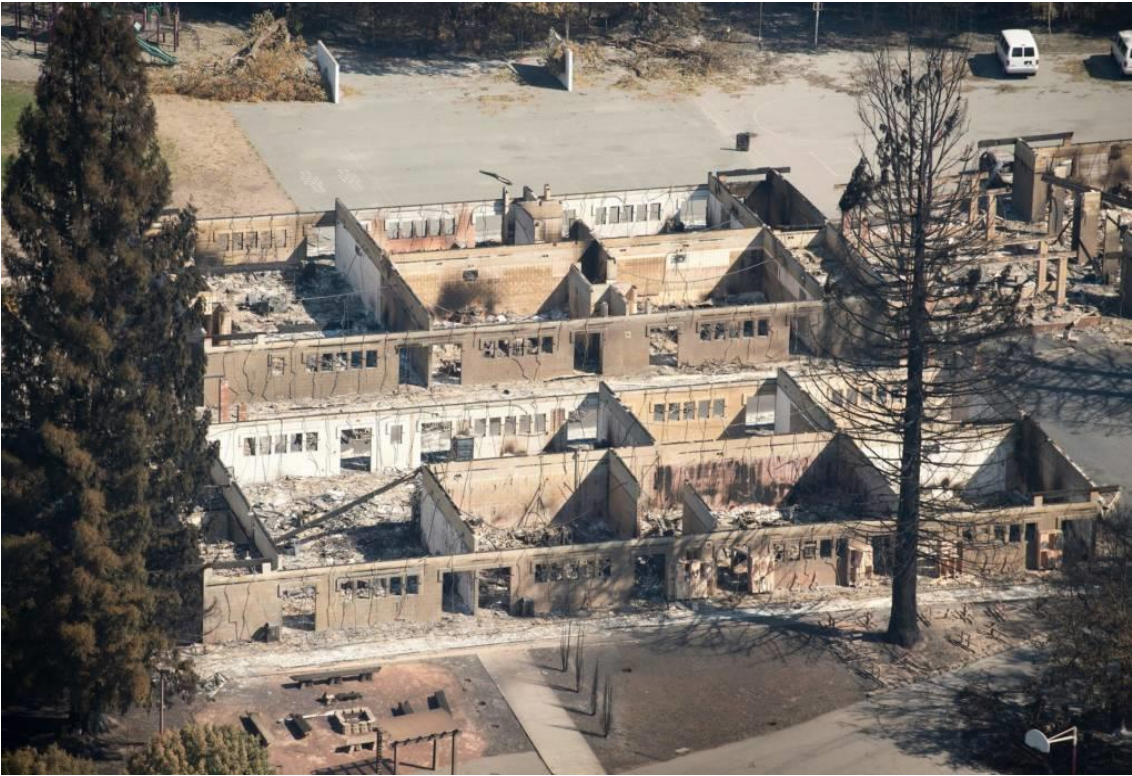


Exhibit 2: Neighborhood in Santa Rosa, CA



Exhibit 3: Heavy smoke on Hwy 299 between Helena and Junction City



Submitted by:

Keith Smith
California State E-Rate Coordinator
California Department of Education
Kpsmith@cde.ca.gov
916-319-0317

Rachel White
California State E-Rate Coordinator
rwhite@bcoe.org
530-532-5678