

## Appendix

### ILLUSTRATION A:

The example below is from USAC’s Entity Download Tool<sup>1</sup>, the Parent in this example PINE BLUFF SCHOOL DISTRICT BEN: 139360. The Child Entities for PINE BLUFF SCHOOL DISTRICT are listed in the first Column “Entity Name” and their Physical Addresses are listed in each row.

Entity Name	Entity #	Entity Type	Parent Entity Name	Parent Entity #	Parent Entity Type	Physical Address	Physical City	Physical County	Physical State	Zip
BROADMOOR ELEMENTARY SCHOOL	81983	School	PINE BLUFF SCHOOL DISTRICT	139360	School District	1106 WISCONSIN	PINE BLUFF	JEFFERSON	AR	71601
PINE BLUFF HIGH SCHOOL	81990	School	PINE BLUFF SCHOOL DISTRICT	139360	School District	711 W 11TH AVE	PINE BLUFF	JEFFERSON	AR	71601
34TH AVE ELEM SCHOOL	81994	School	PINE BLUFF SCHOOL DISTRICT	139360	School District	801 E 34TH AVE	PINE BLUFF	JEFFERSON	AR	71601
BELAIR MIDDLE SCHOOL	81995	School	PINE BLUFF SCHOOL DISTRICT	139360	School District	1301 COMMERCE RD	PINE BLUFF	JEFFERSON	AR	71601
JACK ROBEY JUNIOR HIGH SCHOOL	82012	School	PINE BLUFF SCHOOL DISTRICT	139360	School District	4103 S OLIVE ST	PINE BLUFF	JEFFERSON	AR	71603
SOUTHWOOD ELEMENTARY SCHOOL	82013	School	PINE BLUFF SCHOOL DISTRICT	139360	School District	4200 FIR ST	PINE BLUFF	JEFFERSON	AR	71603
W. T. CHENEY ELEMENTARY SCHOOL	82014	School	PINE BLUFF SCHOOL DISTRICT	139360	School District	2206 RIDGWAY RD	PINE BLUFF	JEFFERSON	AR	71603
FIRST WARD LEARNING CENTER	16075868	Non-Instructional Facility (NIF)	PINE BLUFF SCHOOL DISTRICT	139360	School District	1300 EAST 5TH STREET	PINE BLUFF	JEFFERSON	AR	71601
PINE BLUFF DIST ADMIN ANNEX	16060785	Non-Instructional Facility (NIF)	PINE BLUFF SCHOOL DISTRICT	139360	School District	512 S PINE	PINE BLUFF	JEFFERSON	AR	71601
PBSD WAREHOUSE	16075865	Non-Instructional Facility (NIF)	PINE BLUFF SCHOOL DISTRICT	139360	School District	105 SOUTH WALNUT	PINE BLUFF	JEFFERSON	AR	71601
PBSD PARENT CENTER	16075866	Non-Instructional Facility (NIF)	PINE BLUFF SCHOOL DISTRICT	139360	School District	1215 WEST MULLEN STREET	PINE BLUFF	JEFFERSON	AR	71601
PBSD MAINTENANCE/TRANSPORTATION	16075867	Non-Instructional Facility (NIF)	PINE BLUFF SCHOOL DISTRICT	139360	School District	300 NORTH LINDEN STREET	PINE BLUFF	JEFFERSON	AR	71601

### ILLUSTRATION B:

Mock Example: 470 Detail Report Output example with “Location” tab added for illustrative purposes.

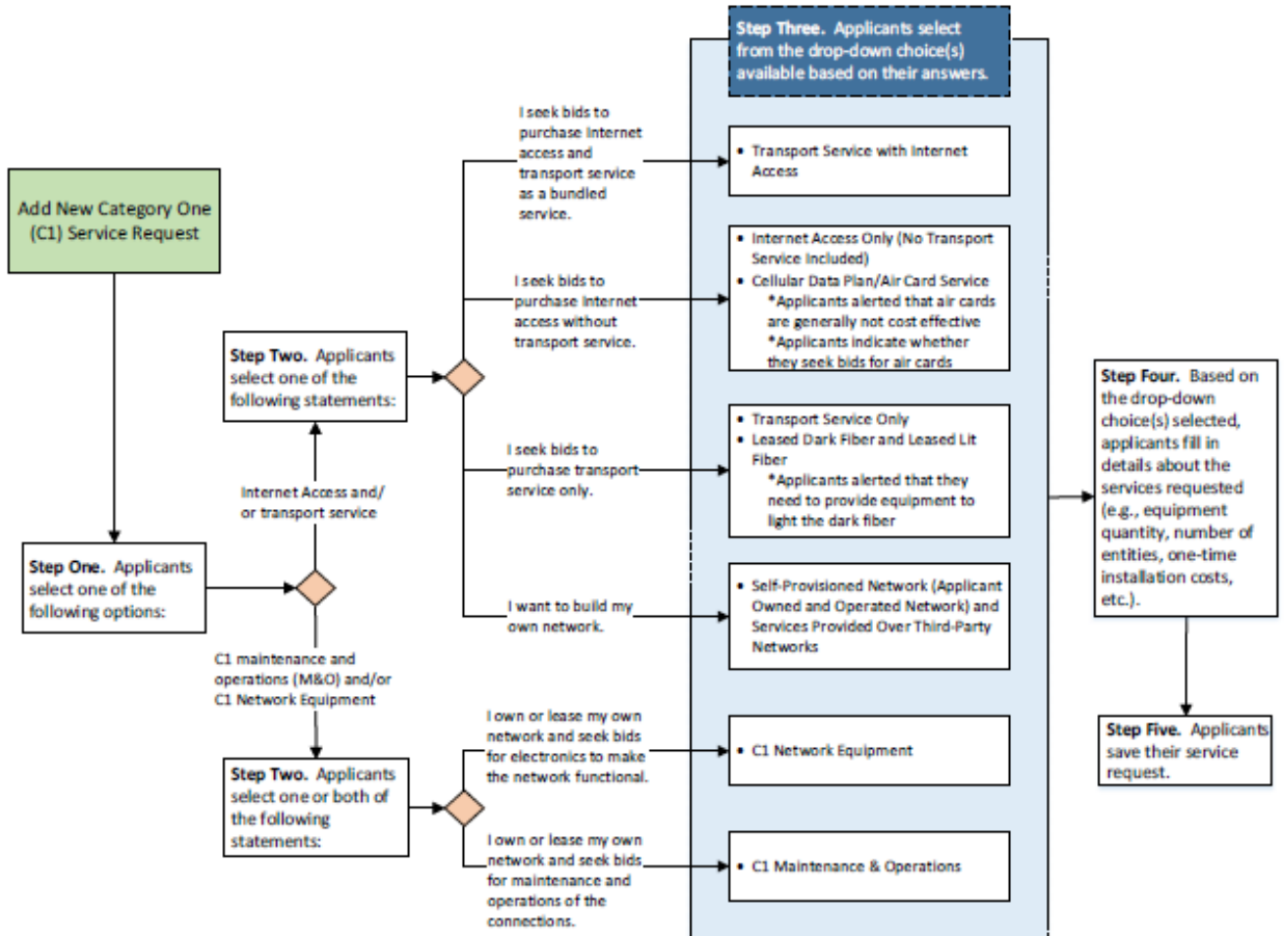
Fund Year	470 Number	Form Nickname	Entity Name	Entity #	Entity Type	Parent Entity Name	Parent Entity #	Parent Entity Type	Physical Address	Physical City	Physical County	Physical State	Zip
2020	200000586	El Dorado Y23	NORTH WEST ELEMENT	82126	School	EL DORADO SCHOOL DISTR	139393	School District	1600 N COLLEGE	EL DORADO	UNION	AR	71730
2020	200000586	El Dorado Y23	HUGH GOODWIN ELEM	82127	School	EL DORADO SCHOOL DISTR	139393	School District	201 E 5TH ST	EL DORADO	UNION	AR	71730
2020	200000586	El Dorado Y23	EL DORADO SENIOR HI	82128	School	EL DORADO SCHOOL DISTR	139393	School District	2000 WILDCAT D	EL DORADO	UNION	AR	71730
2020	200000586	El Dorado Y23	BARTON JR. HIGH SCH	82129	School	EL DORADO SCHOOL DISTR	139393	School District	400 W FAULKNEF	EL DORADO	UNION	AR	71730
2020	200000586	El Dorado Y23	RETTA BROWN ELEMEN	82130	School	EL DORADO SCHOOL DISTR	139393	School District	505 DIXIE DR	EL DORADO	UNION	AR	71730
2020	200000586	El Dorado Y23	YOCUM ELEMENTARY S	82132	School	EL DORADO SCHOOL DISTR	139393	School District	308 S COLLEGE A	EL DORADO	UNION	AR	71730
2020	200000586	El Dorado Y23	WASHINGTON MIDDLE	16021133	School	EL DORADO SCHOOL DISTR	139393	School District	601 MARTIN LUT	EL DORADO	UNION	AR	71730
2020	200000586	El Dorado Y23	DISTRICT OFFICE	16025164	Non-Instri	EL DORADO SCHOOL DISTR	139393	School District	200 WEST OAK	EL DORADO	UNION	AR	71730
2020	200000586	El Dorado Y23	MURMIL HEIGHTS ELEN	82138	Non-Instri	EL DORADO SCHOOL DISTR	139393	School District	2000 RIPLEY AVE	EL DORADO	UNION	AR	71730
2020	200000586	El Dorado Y23	SERVICE CENTER	16075117	Non-Instri	EL DORADO SCHOOL DISTR	139393	School District	420 S. NEWTON	EL DORADO	UNION	AR	71730
2020	200000586	El Dorado Y23	Educational Center	17020767	Non-Instri	EL DORADO SCHOOL DISTR	139393	School District	501 Timberland	El Dorado	AR	71730	

<sup>1</sup> <https://data.usac.org/publicreports/entitydownload/entity/download>

# Appendix

## ILLUSTRATION C:

### APPENDIX C Category One Flow Chart\*

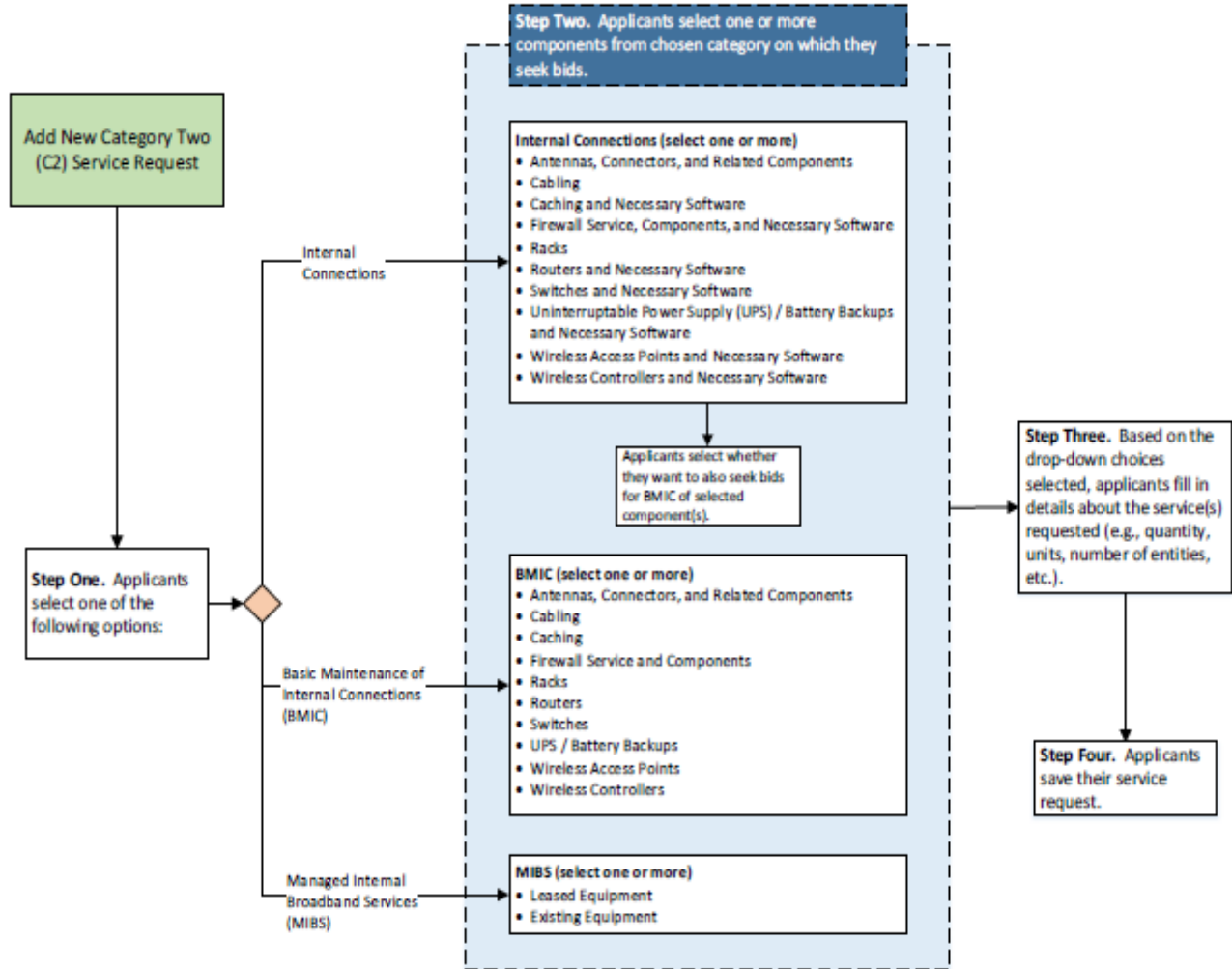


\* Before reaching the service request stage of the FCC Form 470, applicants generally provide contact information, indicate their applicant type (e.g., library, school district, etc.), provide the number of eligible entities served, and list the sites where they plan to receive service.

# Appendix

## ILLUSTRATION D:

### APPENDIX D Category Two Flow Chart\*



\* Before reaching the service request stage of the FCC Form 470, applicants generally provide contact information, indicate their applicant type (e.g., library, school district, etc.), provide the number of eligible entities served, and list the sites where they plan to receive service.

# Appendix

## ILLUSTRATION E:

### EXAMPLE OF 470'S

Example of no RFP or location information in Narrative.

Form 470: 200001575

#### ▢ Billed Entity Information ^ v

Billed Entity		Contact Information	
<b>Applicant:</b>	JUNCTION INDEP SCHOOL DISTRICT	<b>Contact Name:</b>	Cheryl Herring
<b>Billed Entity Number:</b>	141162	<b>Address:</b>	
<b>Address:</b>	1700 COLLEGE ST JUNCTION, TX 76849-4508	<b>Phone:</b>	(325) 446-3537
<b>Phone:</b>	(325) 446-3510	<b>E-mail:</b>	<a href="mailto:cheryl.herring@junctionisd.net">cheryl.herring@junctionisd.net</a>
<b>Application Type:</b>	School district		

#### ▢ Services ^ v

##### Category One

Junction is a rural area. Internet access may not be accessible for all vendors.

##### Data Transmission and/or Internet Access

<b>Function:</b>	Leased Lit Fiber (with or without Internet Access)	<b>Entities:</b>	4	<b>Installation and Initial Configuration?</b>	N
<b>Manufacturer:</b>		<b>Quantity:</b>	200	<b>Maintenance and Technical Support?</b>	N
<b>Minimum Capacity:</b>	500 Mbps	<b>Unit:</b>	Circuits	<b>Associated RFPs:</b>	No
<b>Maximum Capacity:</b>	750 Mbps				

##### RFPs

No RFPs were provided with this Form 470.

Additional example of no RFP or location information in Narrative.

Form 470: 200001173

#### Billed Entity

<b>Applicant:</b>	EDNA INDEP SCHOOL DISTRICT
<b>Billed Entity Number:</b>	141437
<b>Address:</b>	601 N. Wells EDNA, TX 77957
<b>Phone:</b>	(361) 782-3573
<b>Application Type:</b>	School district

#### Contact Information

<b>Contact Name:</b>	Daniel Harper
<b>Address:</b>	601 N. Wells EDNA, TX 77957
<b>Phone:</b>	(361) 782-3573
<b>E-mail:</b>	<a href="mailto:dharper@ednaisd.org">dharper@ednaisd.org</a>

#### Consultant Information

<b>Consultant:</b>	E-Rate Consulting Specialists Inc.
<b>Address:</b>	
<b>Phone:</b>	(281) 232-0928
<b>E-mail:</b>	<a href="mailto:tim@ecspecialists.net">tim@ecspecialists.net</a>

#### ▢ Services ^ v

##### Category One

This request is for Distance Learning (H.323 Interactive Video Service only). All solutions should include installation and initial configuration (if needed), a method to report service outages and receive basic technical support without additional service fees, and a service level agreement. All solutions can include special construction or one-time E-Rate eligible non-recurring costs as well as E-Rate eligible recurring circuit costs. Based on the bids and both a short term and long term effectiveness analysis, we will determine which of the solutions is most beneficial to the district.

##### Data Transmission and/or Internet Access

<b>Function:</b>	Leased Lit Fiber (with or without Internet Access)	<b>Entities:</b>	4	<b>Installation and Initial Configuration?</b>	Y
<b>Manufacturer:</b>		<b>Quantity:</b>	1	<b>Maintenance and Technical Support?</b>	N
<b>Minimum Capacity:</b>	1 Gbps	<b>Unit:</b>	Circuits	<b>Associated RFPs:</b>	No
<b>Maximum Capacity:</b>	1 Gbps				

##### RFPs

No RFPs were provided with this Form 470.

# Appendix

Example of applicant who has provided addresses, but had to do so in a narrative.

## Billed Entity

**Applicant:** PERQUIMANS COUNTY SCHOOL DISTRICT  
**Billed Entity Number:** 126926  
**Address:** 411 S EDENTON ROAD ST  
HERTFORD, NC 27944  
**Phone:** (252) 426-5741  
**Application Type:** School district

## Contact Information

**Contact Name:** Martha Nixon  
**Address:**  
**Phone:** (252) 426-1258  
**E-mail:** [marthanixon@pcs.k12.nc.us](mailto:marthanixon@pcs.k12.nc.us)

## Services

### Category One

Lit Fiber Service Request - Seeking bids for 3 and 5 year contracts. WAN to schools and support sites: Four (4) Circuits at 1Gbps 1. PQ Central School (181 Winfall Blvd Winfall, NC 27985), 2. PQ Middle School (312 W. Main Street Winfall, NC 27985), 3. Hertford Grammar School (603 Dobbs Street Hertford, NC 27944) 4. Bus/ maintenance building ( Jimmy Hunter Drive Hertford, NC 27944) Also, seeking bids for: ONE (1) 2Gbps, 5Gbps, or 10Gbps aggregation circuit that serve PQ High School (305 Edenton Road St. Hertford, NC 27944) and District Office Service must include all necessary equipment to light the fiber.

#### Data Transmission and/or Internet Access

<b>Function:</b> Leased Lit Fiber (with or without Internet Access)	<b>Entities:</b> 5	<b>Installation and Initial Configuration?</b> Y
<b>Manufacturer:</b>	<b>Quantity:</b> 4	<b>Maintenance and Technical Support?</b> N
<b>Minimum Capacity:</b> 1 Gbps	<b>Unit:</b> Circuits	<b>Associated RFPs:</b> No
<b>Maximum Capacity:</b> 1 Gbps		

#### Data Transmission and/or Internet Access

<b>Function:</b> Leased Lit Fiber (with or without Internet Access)	<b>Entities:</b> 2	<b>Installation and Initial Configuration?</b> Y
<b>Manufacturer:</b>	<b>Quantity:</b> 1	<b>Maintenance and Technical Support?</b> N
<b>Minimum Capacity:</b> 2 Gbps	<b>Unit:</b> Circuits	<b>Associated RFPs:</b> No
<b>Maximum Capacity:</b> 10 Gbps		

## RFPs

No RFPs were provided with this Form 470.